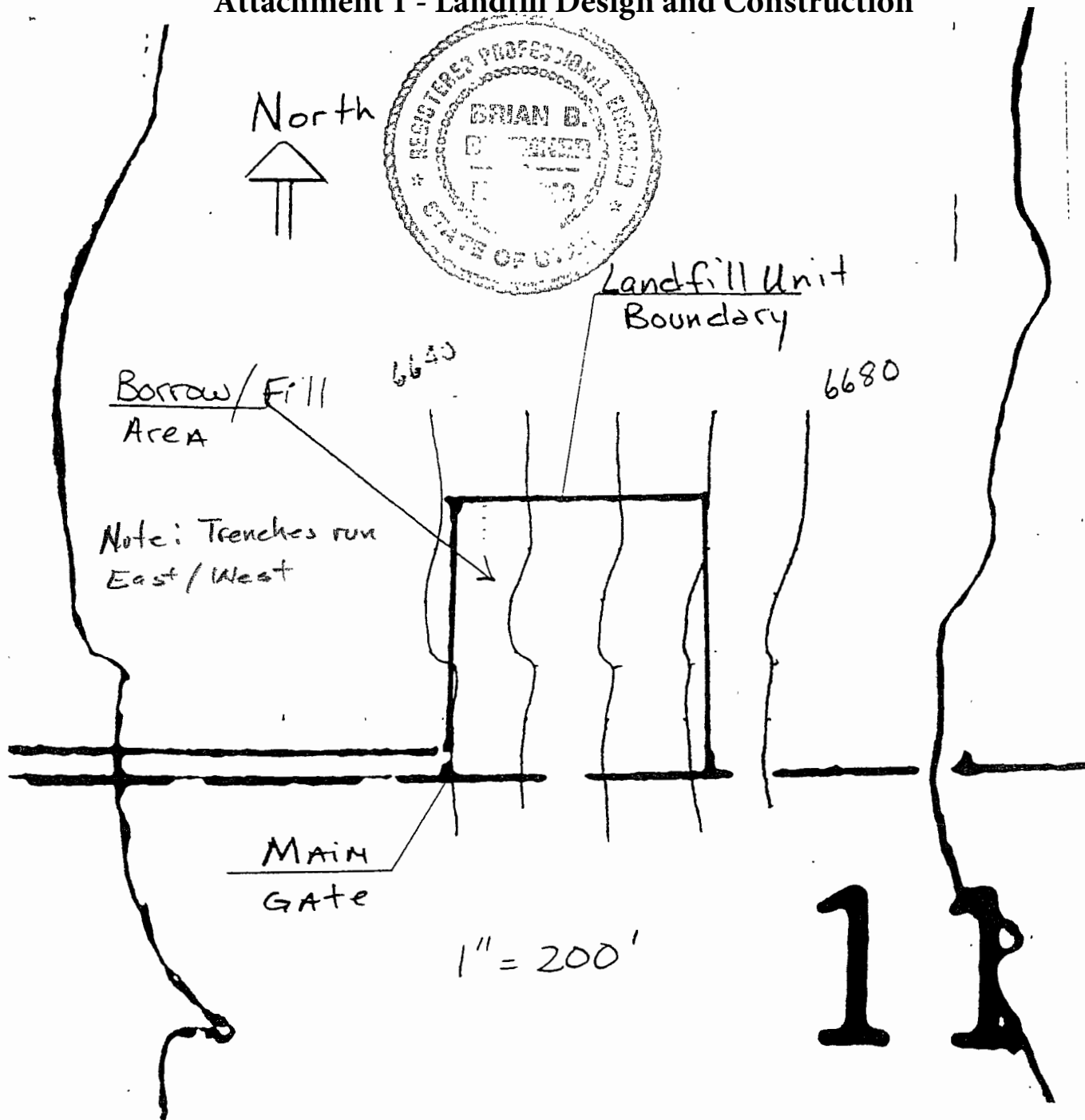
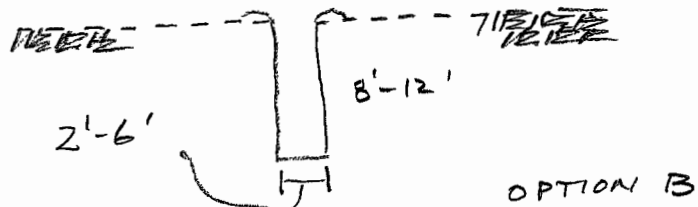
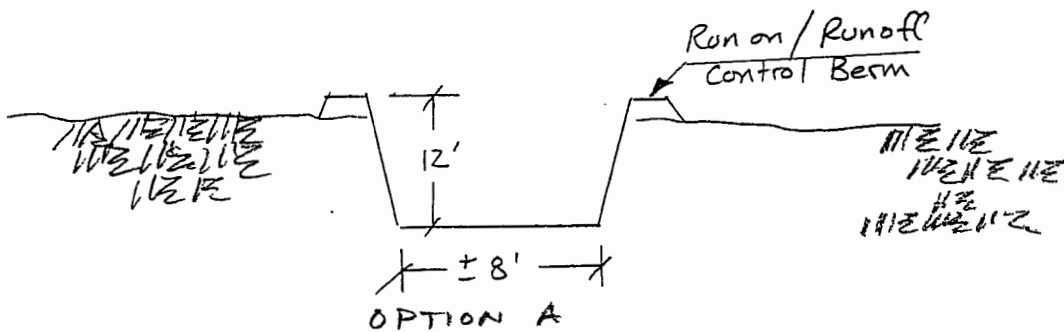


# Attachment 1 - Landfill Design and Construction



## FINAL COVER

2 FT fill over top of waste

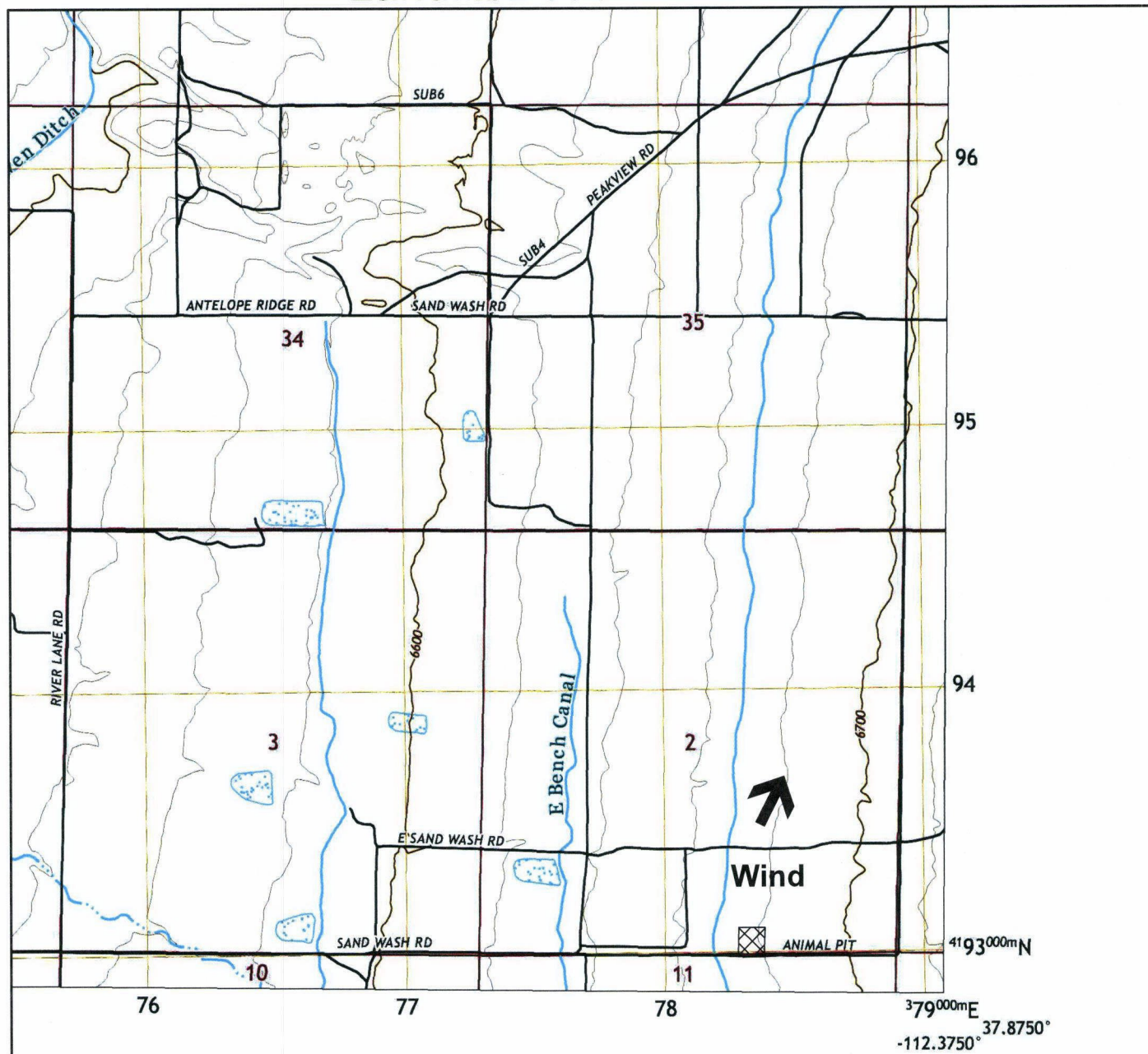


GARFIELD COUNTY --  
CLASS IV LANDFILL/DEAD ANIMAL PIT

Exhibit 6a. Landfill Map



# Exhibit #6b Landfill Map Garfield County Class IV b Landfill/Dead Animal Pit



QUADRANGLE LOCATION

### ROAD CLASSIFICATION

|                  |              |                 |  |
|------------------|--------------|-----------------|--|
| Expressway       |              | Local Connector |  |
| Secondary Hwy    |              | Local Road      |  |
| Ramp             |              | 4WD             |  |
| Interstate Route | US Route     | State Route     |  |
| FS Primary Route | FS Passenger | FS High         |  |

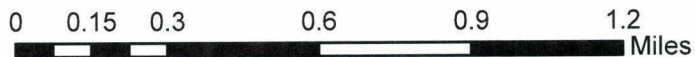
### Legend



Wind



Landfill/Dead Animal Pit



1 inch = 2,000 feet